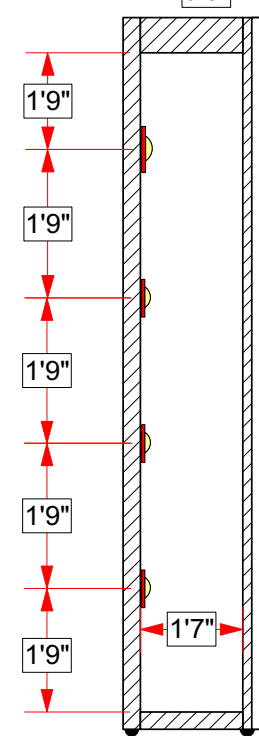
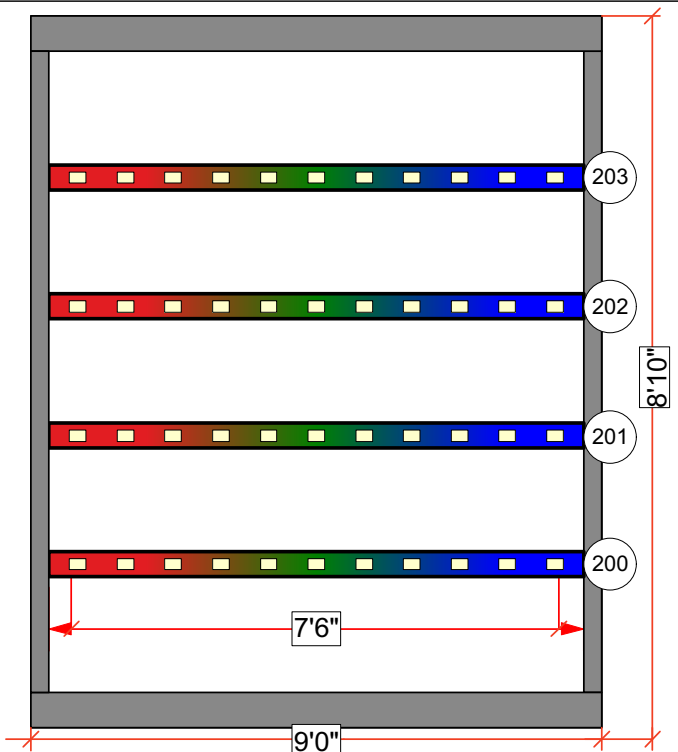


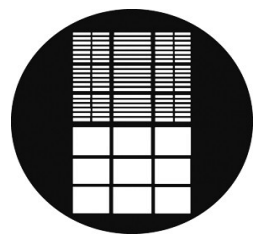
Light Box Detail



Note:
Rosebrand Poly Cyc is used as facing. Please attach LED tape to rear interior of flat at specified measurements.

C1 Light Box Detail
Drawing not to scale

Templet Legend



Templet A
Office Window 4
G 759
Count: 1
A size



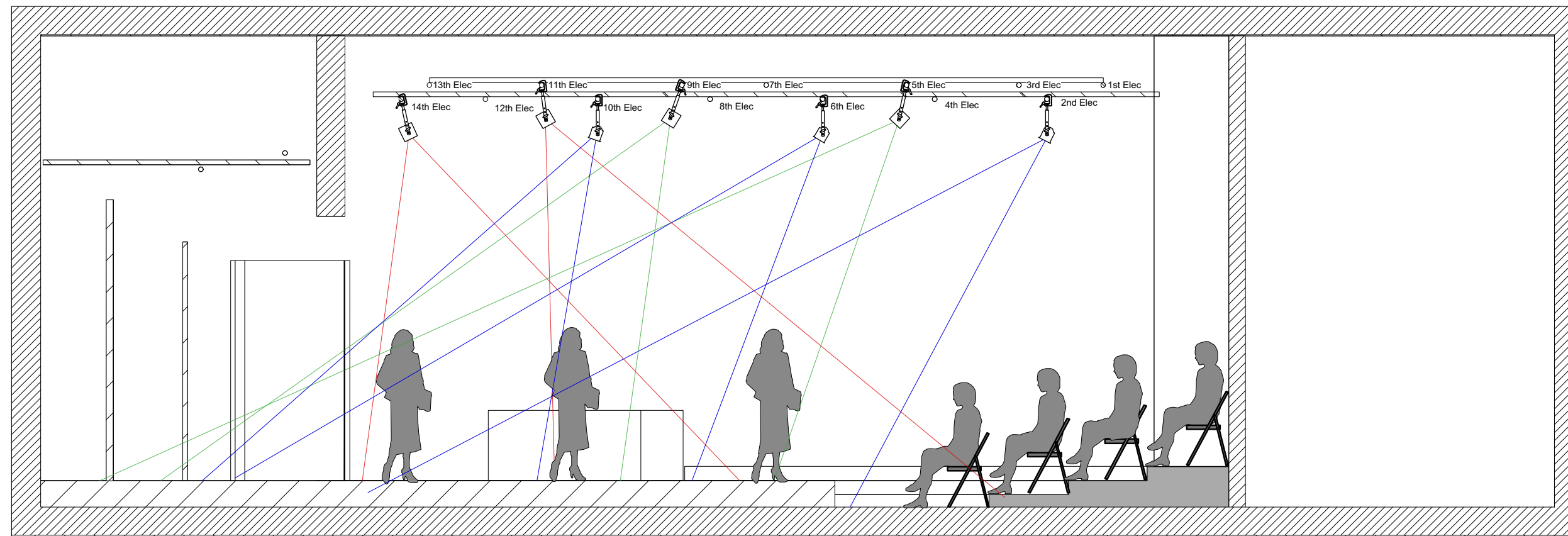
Templet B
Double Hung Window
G 203
Count: 2
A size



Templet C
Pine Branches 2
R 79657
Count: 2
A size



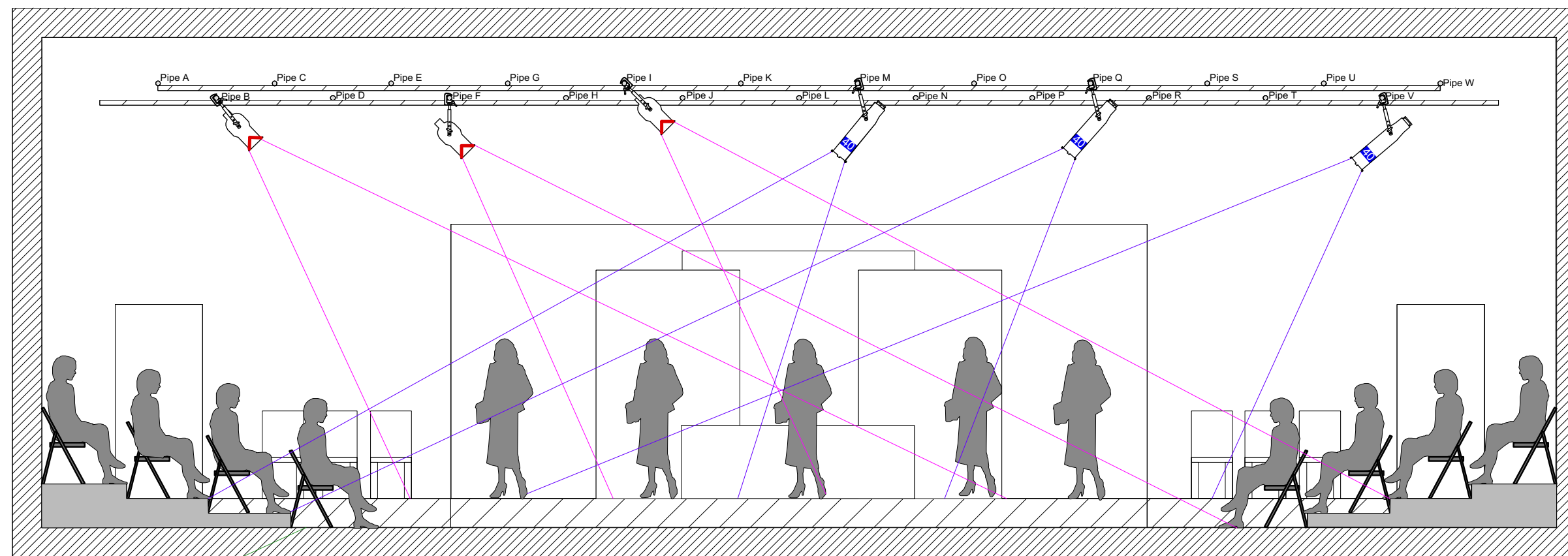
Templet D
Venitian Blinds
G 205
Count: 1
A size



A1

Right Viewing Section

1/4' = 1'0"



B1

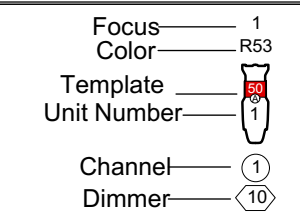
Front Viewing Section

1/4' = 1'0"

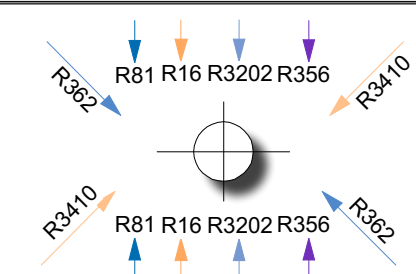
Key to Instrumentation

Used	Symbol	Instrument	Wattage	Stock	Available
2		26 Degree Source 4	750w	2	0
2		26 Degree Source 4	750w	2	0
2		50 Degree Source 4	750w	2	0
2		Altman 6x9	575w	8	6
10		Altman 4.5 x 6.5	575w	14	4
9		Colortran 6/50 40 Degree	575w	9	0
17		Altman 6" Fresnel w/ barndoor	750w	18	1
13		EC 6" Fresnel	750w	14	1
12		6' R40 FL Striplight 12 cell 4 circuit	450w per cir.	12	0
2		Elation LED Par Zoom	575w	2	0
4		3 ch. RGB LED Tape @ 7' 6" Lengths	575w	4	0
1		60w Soft White A-Lamp	60w	5	4

Label Legend



System Legend



Notes

- All Colortran and Altman ellipsoidals Recieve R119 in addition to their color, Diffusion removed from label legend for clarity.
- Provide all available top hats, half hats, and barndoors at focus.
- Provide cuts for R114, R119, R132, R98, and R99 at the time of focus.
- Additional questions or concerns should be made to the designer which can be reached at C: 305.834.3019/ E: JVeradesigns@gmail.com

This drawing represents visual concepts and construction suggestions only. The designer is not qualified to determine the structural appropriateness of this design and will not assume responsibility for improper engineering, construction, or handling. All materials, finishes, and construction must comply with the most stringent federal, state and municipal fire and safety codes.

-- TOP GIRLS --

-- CLARENCE BROWN LAB THEATER --

-- LIGHTING SECTION --

SCALE: 1/4" = 10"	
Plate#: 2 of 2	
DRAFTING DATE: 3/20/17 REVISION NUMBER: 5	DRAFTED BY: JV APPROVAL DATE: 3/21/17